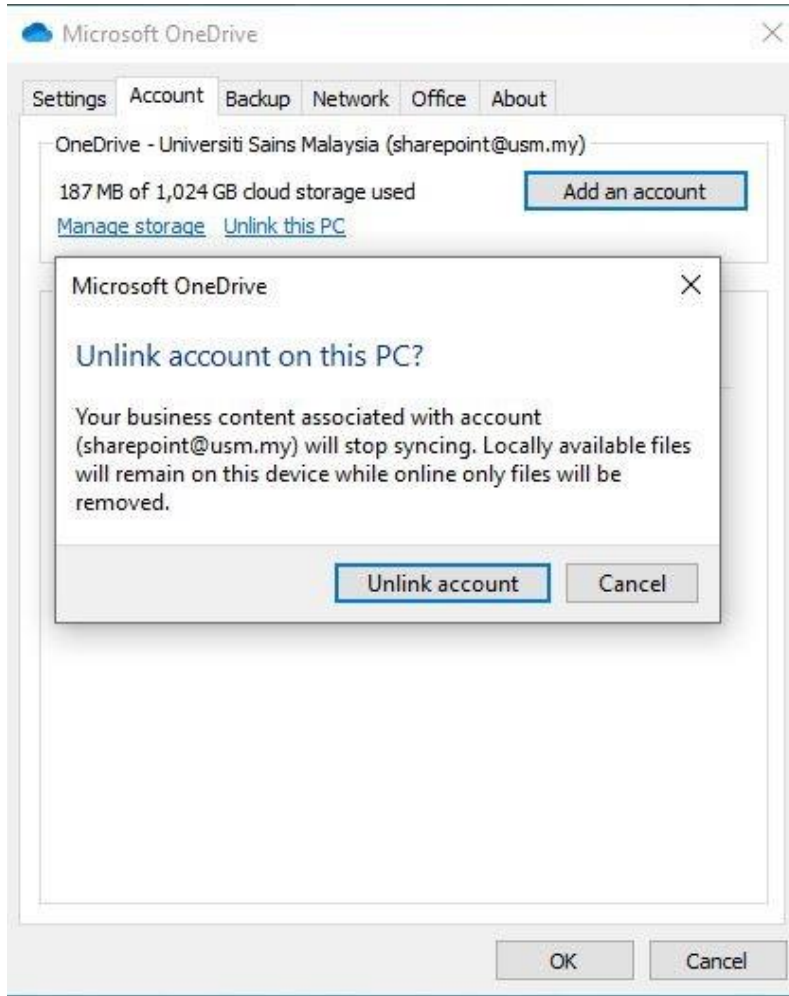
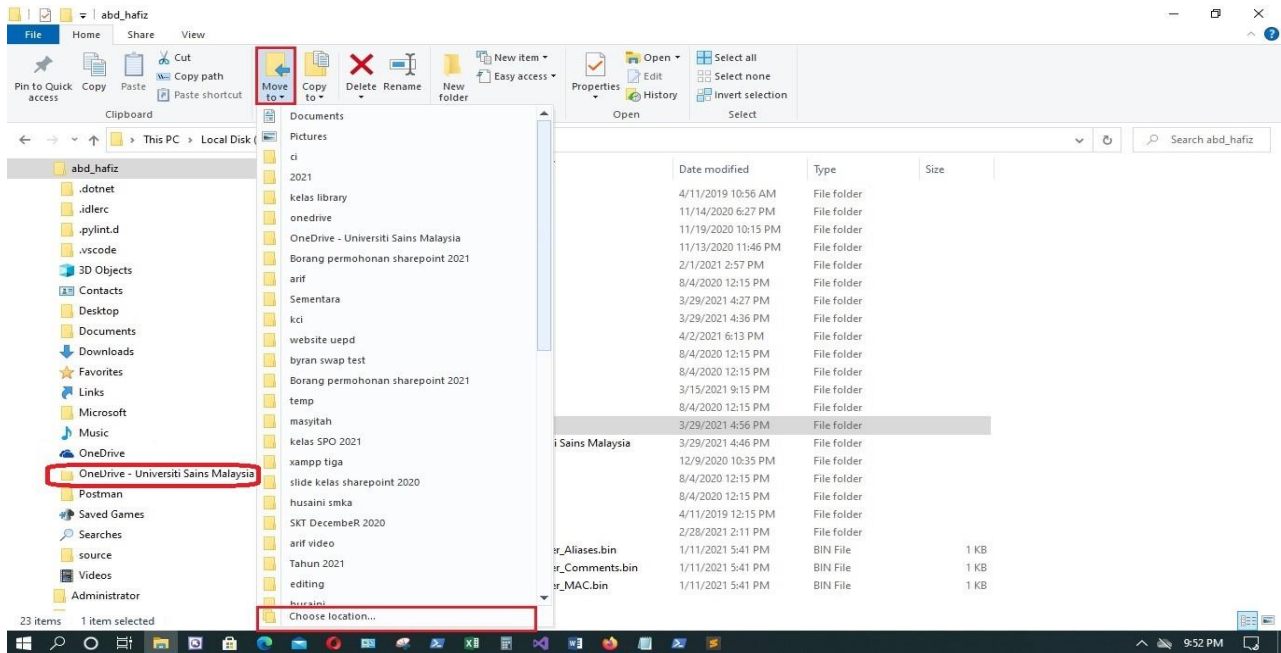


1. Disconnect Onedrive

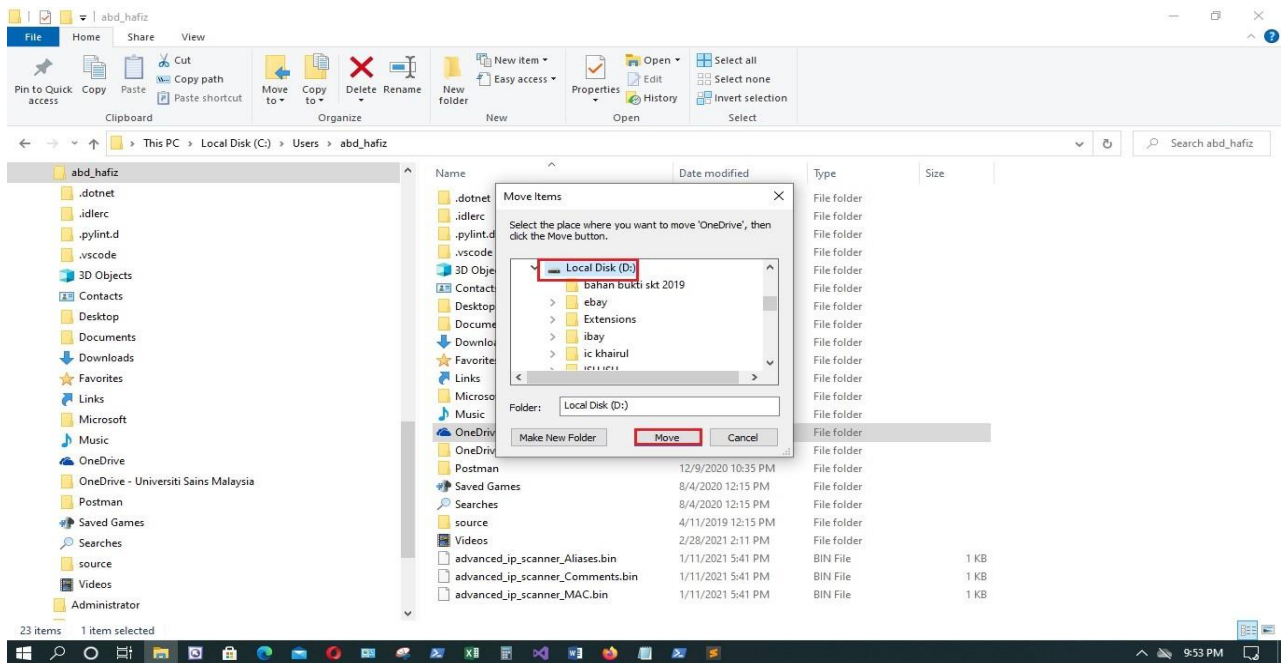




2. Onedrive- Universiti Sains Malaysia folder kemudian klik pilih lokasi



3. Tukar local disk D:



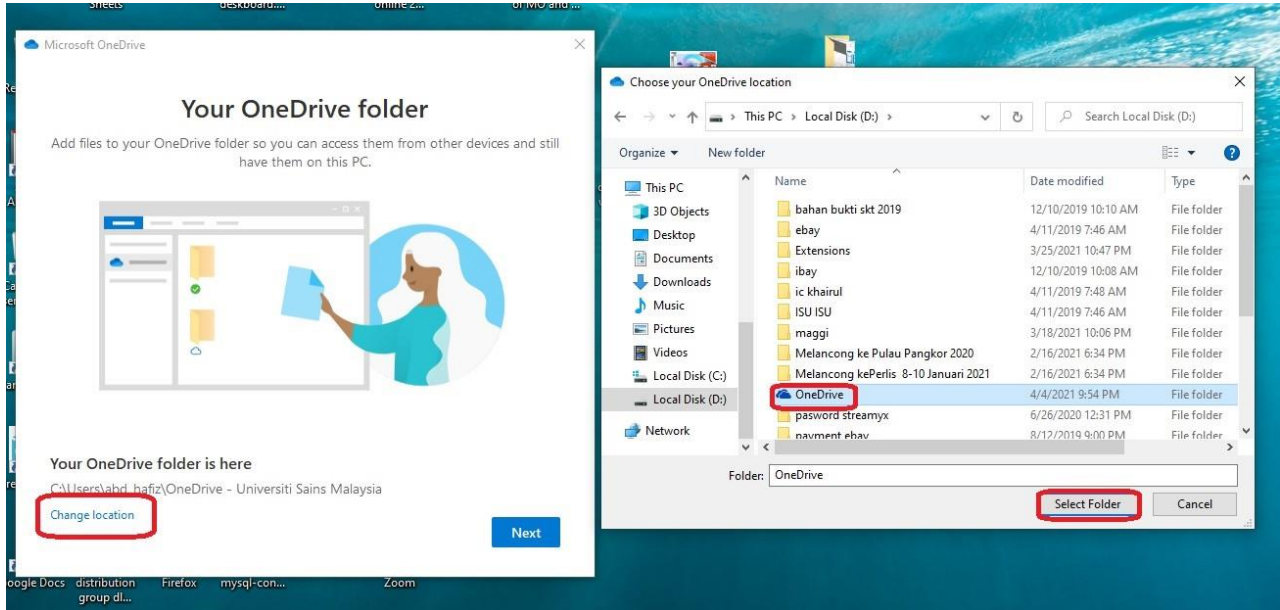


4. Setup Onedrive, masukkan emel ID then Click sign in





5. Klik tukar lokasi drive D: kemudian klik OneDrive kemudian klik pilih folder

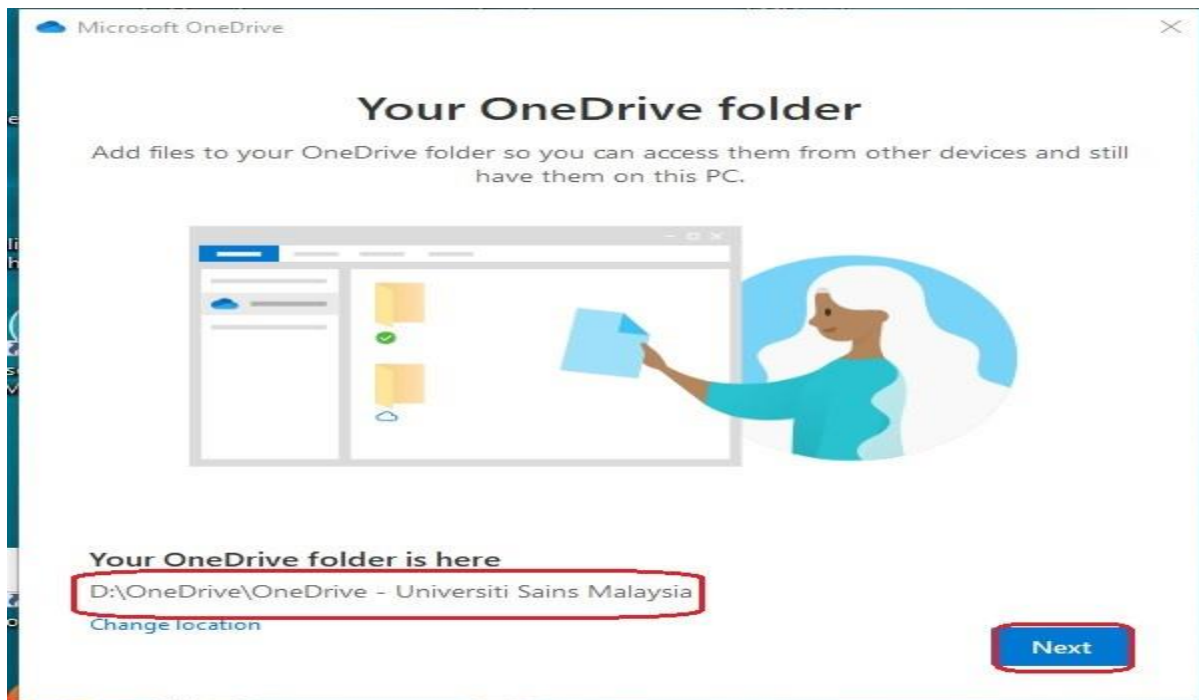


6. Klik use this folder





7. Klik Next



8. Klik Skip

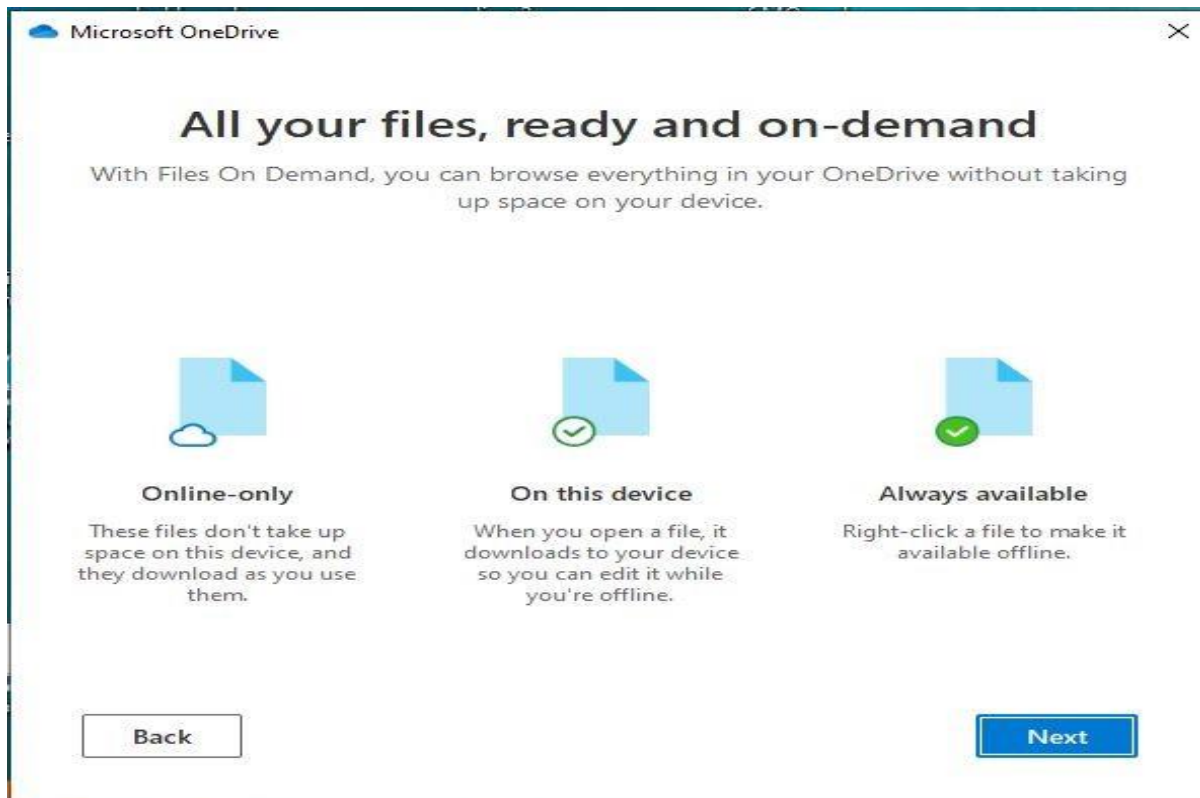




9. Klik Next



10. Klik Next





11. Klik Later





12. Klik open my Onedrive folder

