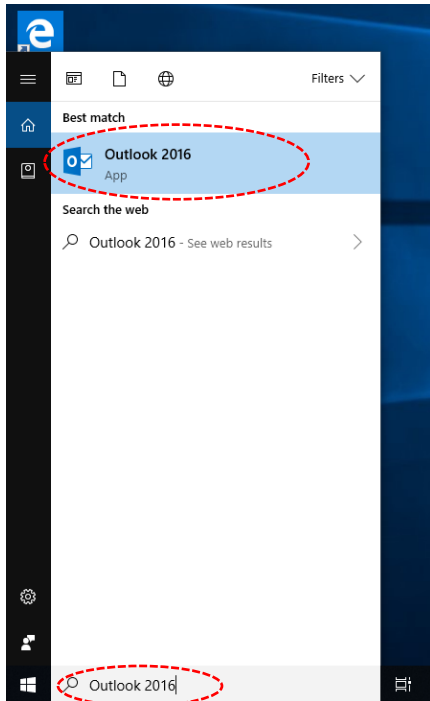
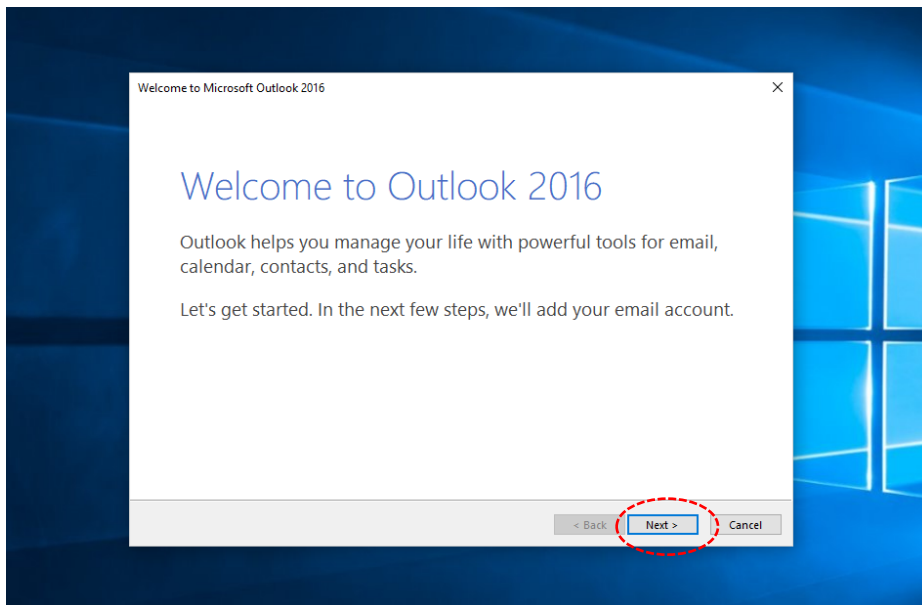


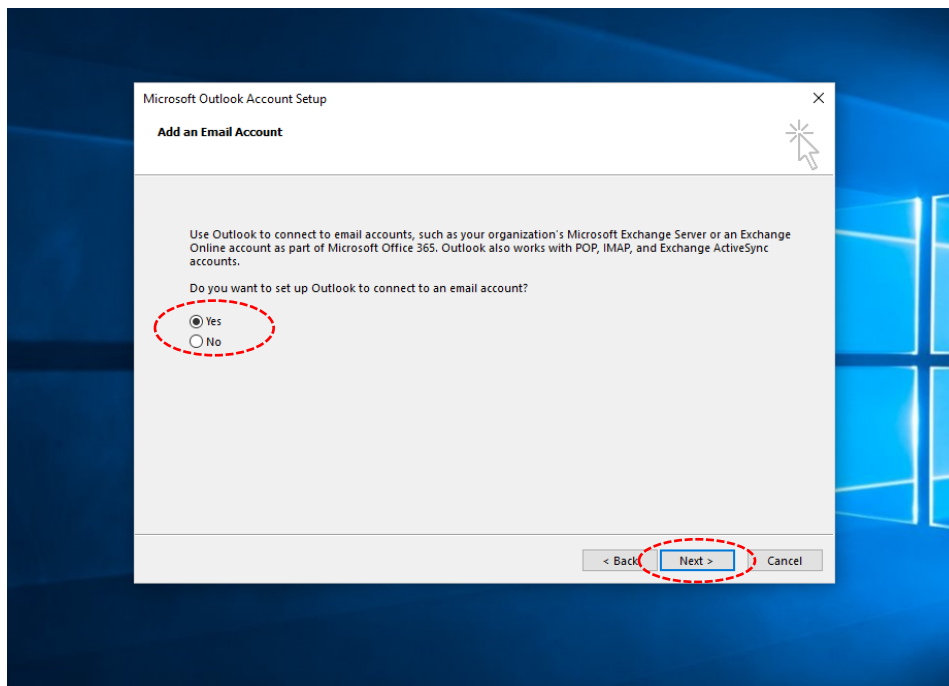
1. Search **Outlook 2016** & Click



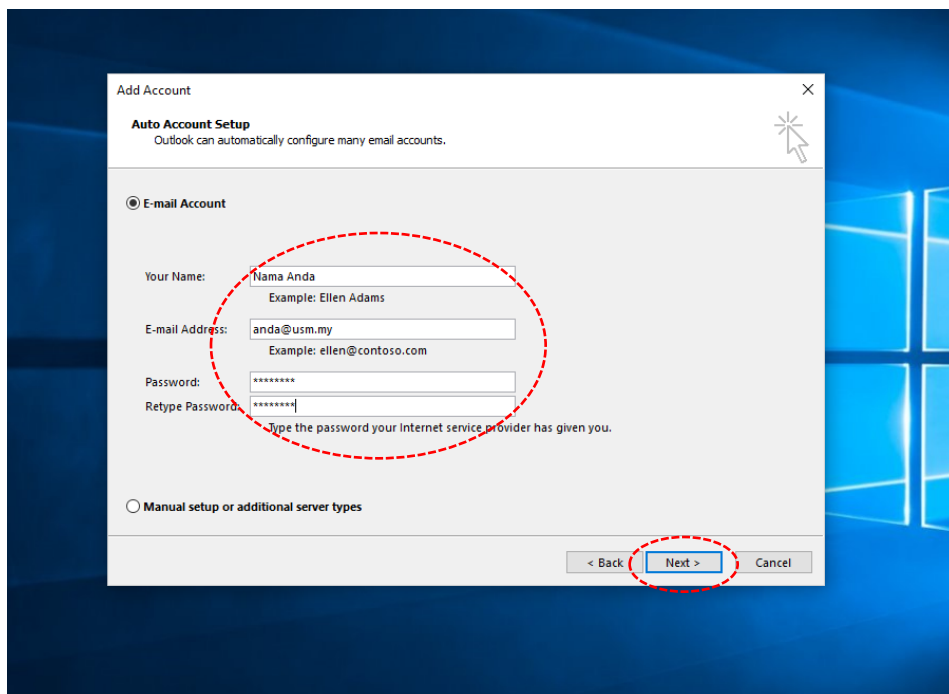
2. Click **Next >**



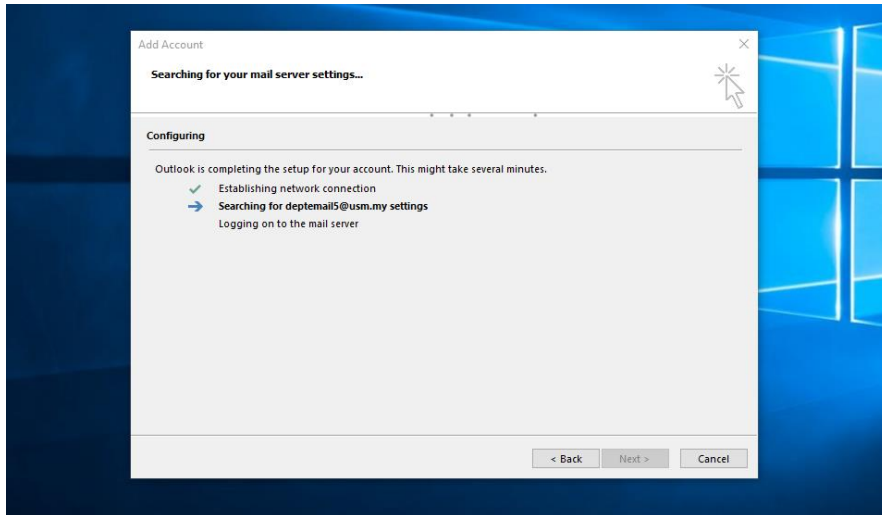
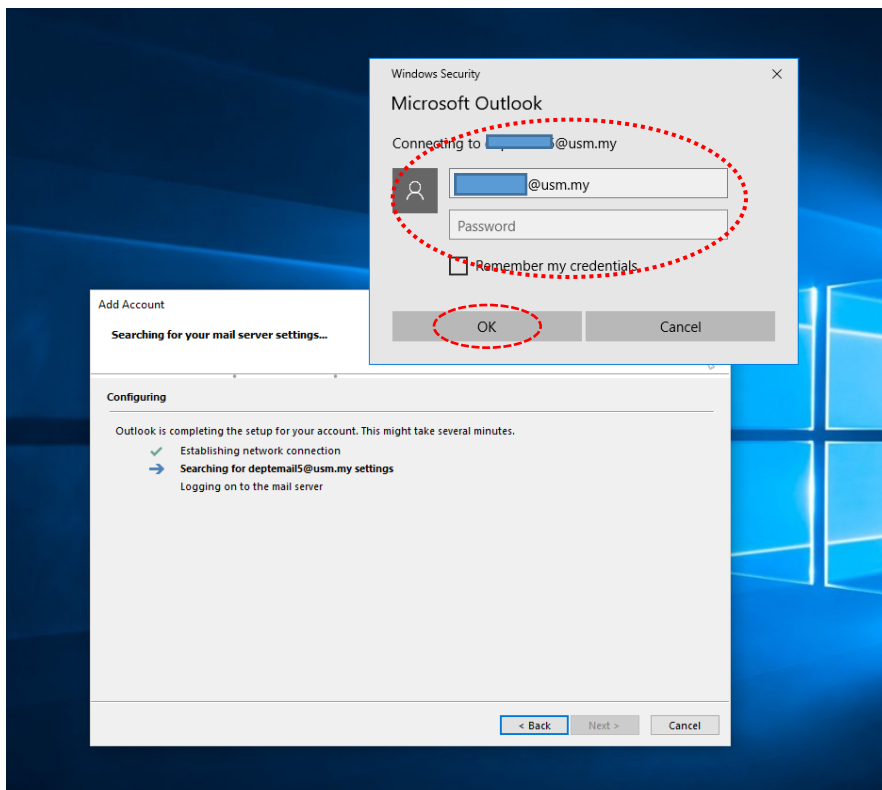
3. Choose **Yes** & Click **Next >**



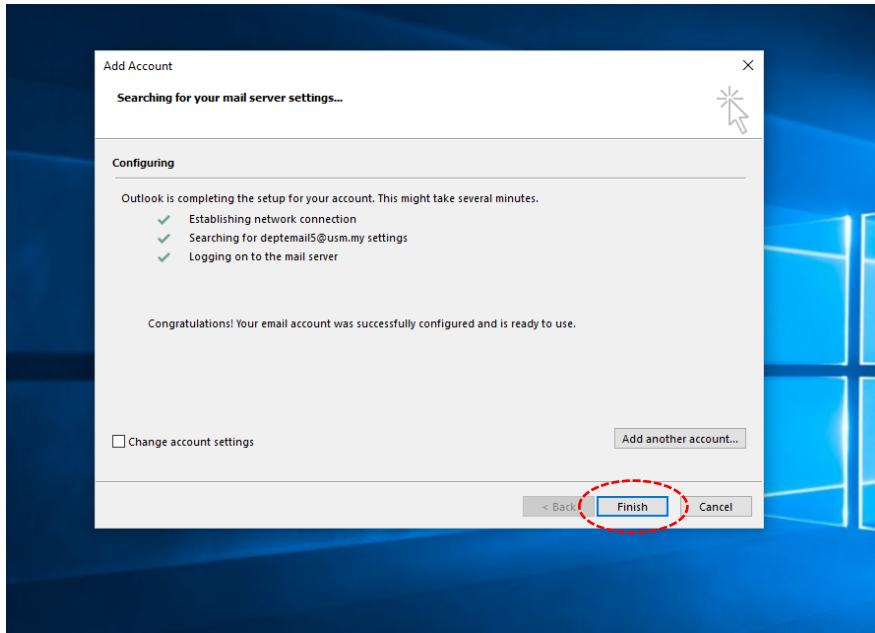
4. Fill in all require field & click **Next>**



5. Hold on, it's coming..

6. Fill in the **password** & click **OK**

7. Click **Finish** & It's done..



8. Your **Outlook 2016** is ready to use..

